

Product Specification

Product **Transparent Panel Module**
Model No. **ST-A2150T1001**

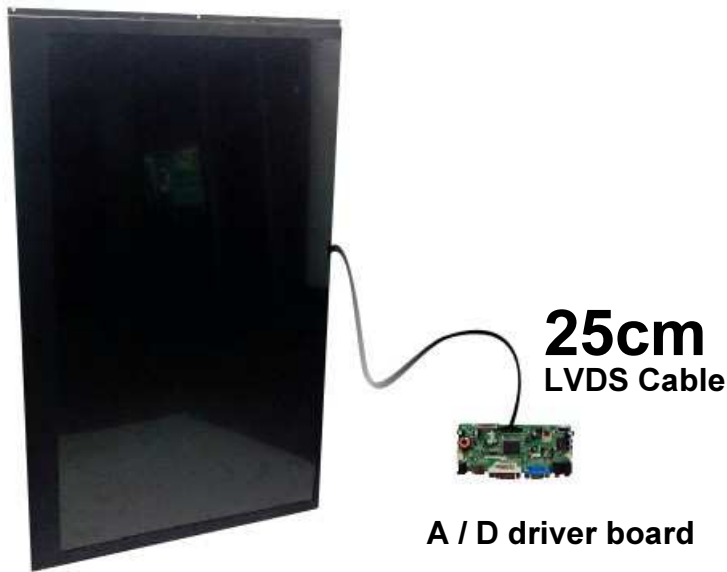
1. GENERAL DESCRIPTION

CHARACTERISTICS

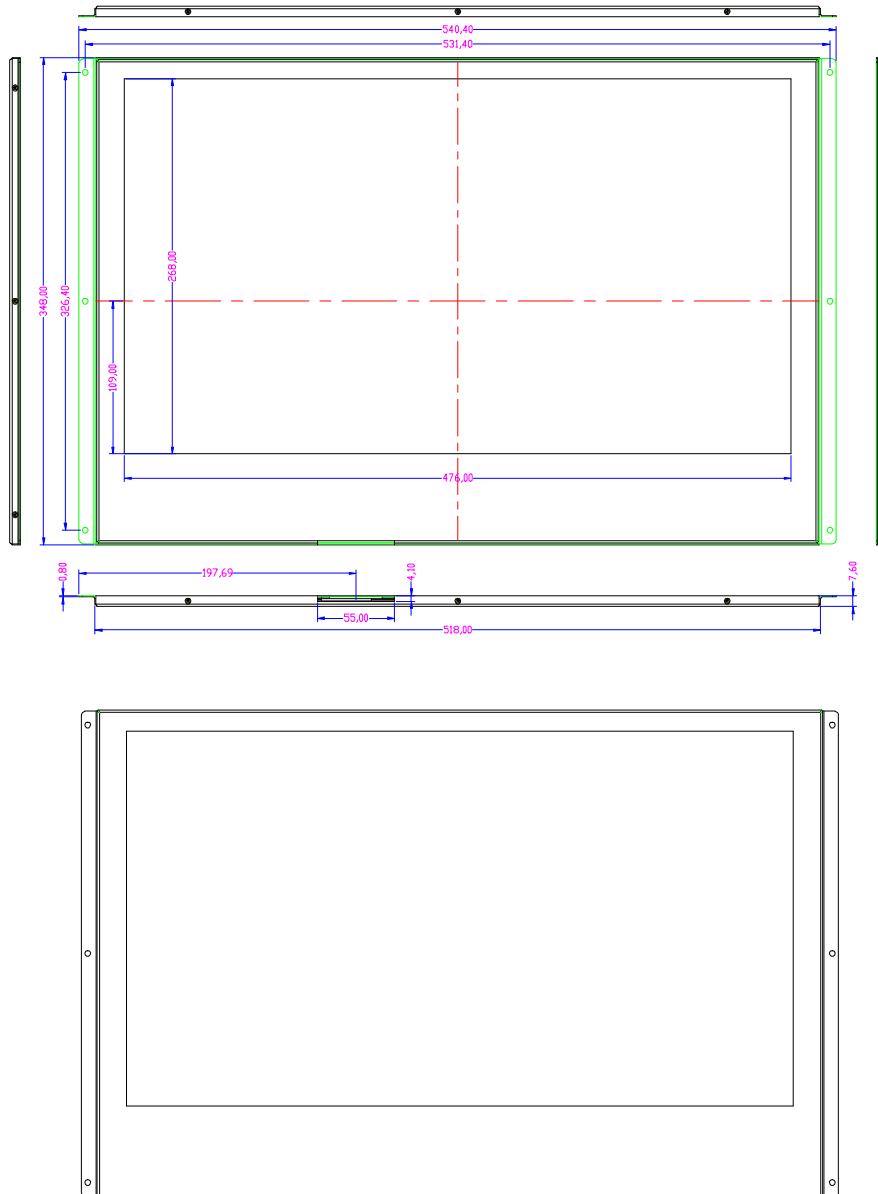
CHARACTERISTICS ITEMS	SPECIFICATIONS
Screen Diagonal [in]	21.5"
Pixels [lines]	1920×1080
Active Area [mm]	476.64 (H) x 268.11 (V)
Pixel Pitch [mm]	0.24825 (H) x 0.24825 (V)
Pixel Arrangement	RGB vertical stripe
Weight [g] (Without the protection film)	585
Physical Size(COF/PWB included) [mm]	487.54(W) x 335.81(H) x 3(D) Typ.
TFT glass Size [mm]	487.54(W) x 282.91(H) x 1.83(D) Typ
Display Mode	Normally White
Surface treatment (Without the protection film)	Anti-glare,3H

* Link Diagram

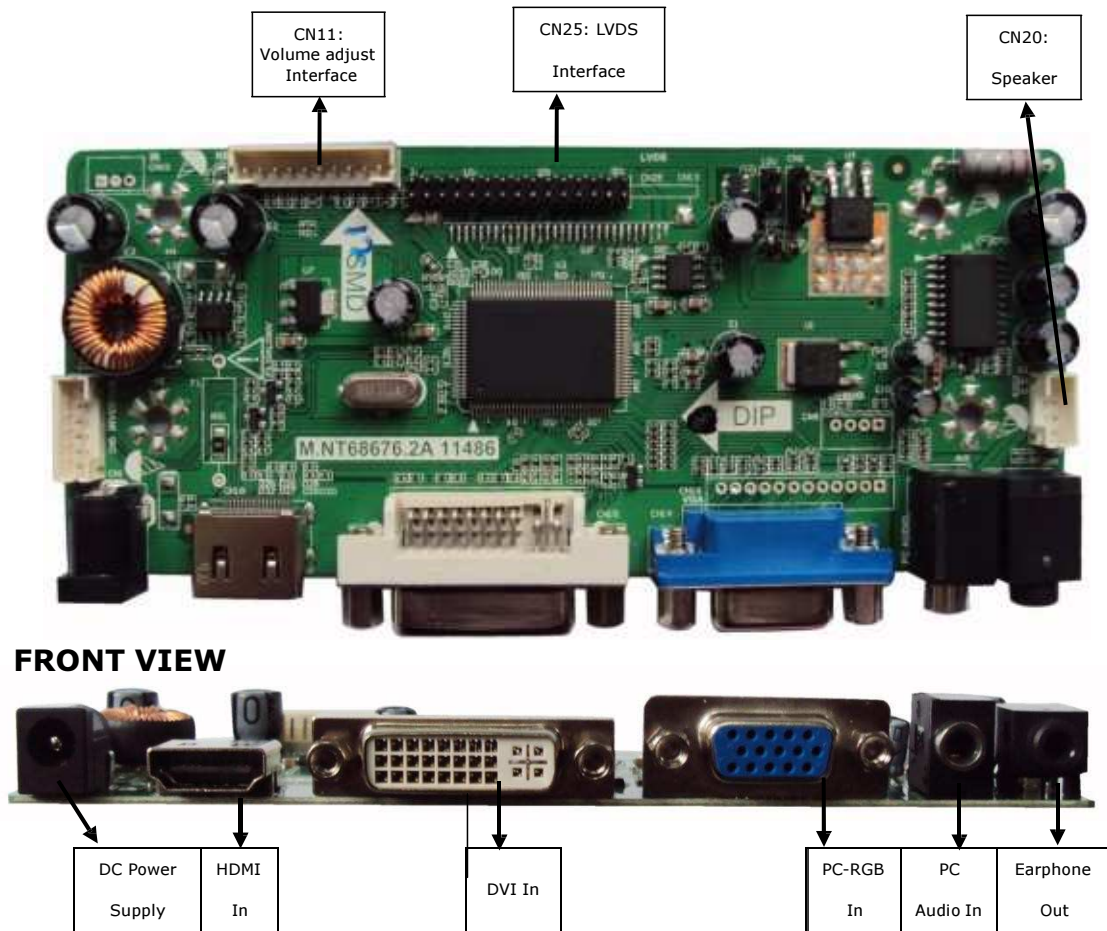
Transparent LCD panel frame



2. PANEL Mechanical Drawing



3. A/D board



Feature

OSD LANGUAGE	Simplified Chinese, Traditional Chinese, English, French, German, Italian, Spanish, Portuguese, Japanese, Korean (optional)		
PANEL	Panel Type	LED/LCD	
	Interface	Single/Dual LVDS (8bit)	
	Max Resolution	2048×1152	
VIDEO INPUT	PC-RGB	Format	Up to 2048×1152@60Hz
	HDMI	480i, 480p, 576i, 576p, 720p, 1080i, 1080p	
AUDIO INPUT	PC Audio	Earphone Input	0.2 ~ 2.0 V _{RMS}
AUDIO OUTPUT	Frequency Response	100Hz~15KHz @±3dB (1KHz, 0dB reference signal)	
	Max Output power	2×1W(8Ω) THD+N<10%@1KHz (Power Supply: 12V, Audio Input: 0.5V _{RMS})	
POWER	Requirement	12V DC/12V(built)/12V,5V(built in)/12V,5V,5VSB(built in)	
	To Panel	3.3V/5V/12V	
	Management	Standby Power Consumption < 0.5W(Board Only)	
KEY FUNCTION	POWER,MENU,VOL+,VOL-,ADJUST/EXIT		

CN11(10PIN/2.0): Volume adjust **CONNECTOR**

NO.	SYMBOL	DESCRIPTION
1	K0	Key0
2	RED	Red Indicator
3	GRN	Green Indicator
4	GND	Ground
5	K1	Key1
6	K2	Key2
7	K3	Key3
8	K4	Key4
9	K5	Key5
10	K6	Key6

CN25(2×15PIN/2.0): LVDS INTERFACE CONNECTOR

NO.	SYMBOL	DESCRIPTION
1	VSEL	Power Supply for Panel
2	VSEL	
3	VSEL	
4	GND	Ground
5	GND	
6	GND	
7	TX00-	LVDS ODD 0- Signal
8	TX00+	LVDS ODD 0+ Signal
9	TX01-	LVDS ODD 1- Signal
10	TX01+	LVDS ODD 1+ Signal
11	TX02-	LVDS ODD 2- Signal
12	TX02+	LVDS ODD 2+ Signal
13	GND	Ground
14	GND	
15	TXOC-	LVDS ODD Clock- Signal
16	TXOC+	LVDS ODD Clock+ Signal
17	TX03-	LVDS ODD 3- Signal
18	TX03+	LVDS ODD 3+ Signal
19	TXE0-	LVDS EVEN 0- Signal
20	TXE0+	LVDS EVEN 0+ Signal
21	TXE1-	LVDS EVEN 1- Signal
22	TXE1+	LVDS EVEN 1+ Signal
23	TXE2-	LVDS EVEN 2- Signal
24	TXE2+	LVDS EVEN 2+ Signal
25	GND	Ground
26	GND	
27	TXEC-	LVDS EVEN Clock- Signal
28	TXEC+	LVDS EVEN Clock+ Signal
29	TXE3-	LVDS EVEN 3- Signal
30	TXE3+	LVDS EVEN 3+ Signal

CN20 (4PIN/2.0): SPEAKER CONNECTOR

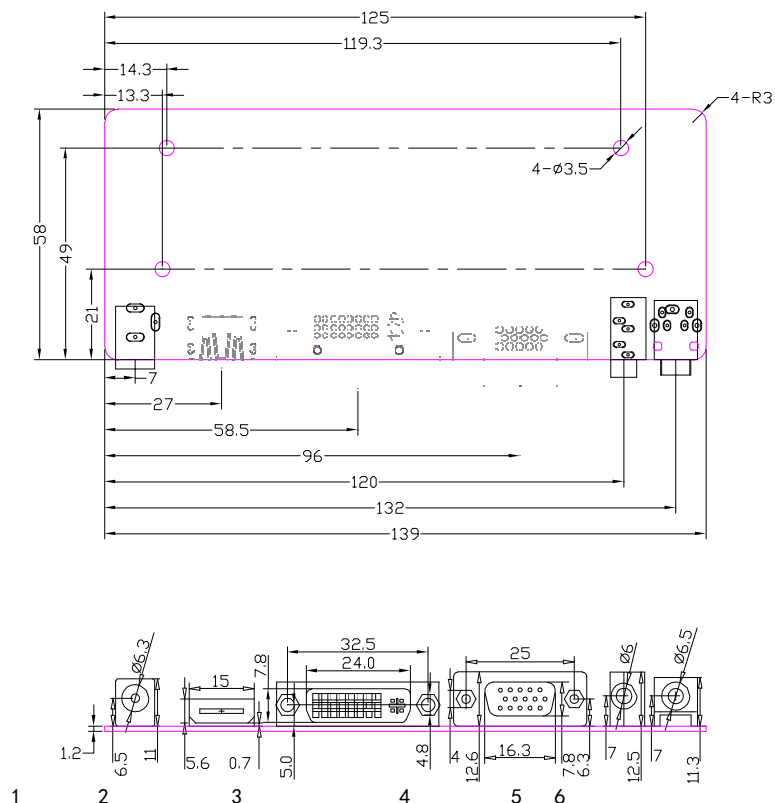
NO.	SYMBOL	DESCRIPTION
1	LO	Audio Left Channel Output
2	GND	Ground
3	GND	
4	RO	Audio Right Channel Output

CONFIGURATION & GENERAL PRECAUTIONS

- Relative humidity: ≤ 80%.
- Storage temperature: -10~60°C.
- Operation temperature: 0~40°C.
- Protect the board from static electricity in case of damage to the IC.
- Keep the board away from conductor when it is working.
- Do not push or pull the connectors when the board is working.
- Do not press, distort or disassemble the board.
- Clean the board with soft dry cloth when it's dirty.
- Do not wire the board to the power supply before panel is correctly connected.

A/D board Mechanical Drawing

PCB DIMENSIONS 139mm(L)*58mm(W)*17mm(H).



Ver.	V1.0
NO.	Description
1	DC IN
2	HDMI IN
3	DVI IN
4	VGA IN
5	PC AUDIO IN
6	EARPHONE OUT