

VIOLET (UV) LASER DIODE

SDL-375-20-511M



SEMICOM
VISUAL

Features

Short Wavelength: 375nm (Typ.)
Threshold current: I_{th} = 50mA (Typ.)
Optical Power: P_o = 20mW (Typ.)
Package: ø5.6mm

Applications

Industrial use
Medical use

Absolute Maximum Ratings

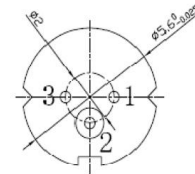
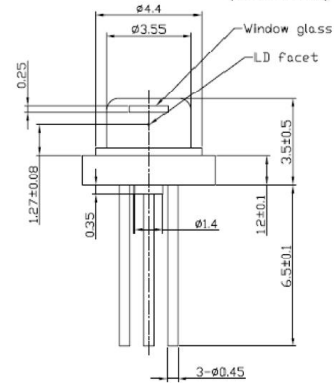
(T_c=25°C)

Items	Symbols	Values	Unit
Optical Output Power	P _o	30	mW
Laser Diode Reverse Voltage	V	5	V
Photo Diode Reverse Voltage	V	20	V
Operating Temperature	Topr	15~+30	°C
Storage Temperature	Tstg	-40~+80	°C

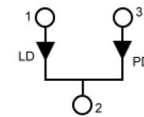
1) Case Temperature

Package

Tolerance : ± 0.2
(Unit : mm)



Pin Connection



M type (M,R)

Electrical and Optical Characteristics

(T_c=25°C)

Items	Symbols	Min	Type	Max.	Unit	Condition
Optical Output Power	P _o	-	20	30	mW	CW
Threshold Current	I _{th}	-	50	65	mA	CW
Operating Current	I _{op}	-	65	90	mA	P _o =20mW
Slope Efficiency	η	-	1.1	1.6	mW/mA	P _o =20mW
Operating Voltage	V _{op}	-	5.5	6.5	V	P _o =20mW
Monitor Current	I _m	-	0.5		mA	P _o =20mW
Lasing Wavelength	λ	369	375	380	nm	P _o =20mW
Beam Divergence	//	5	9	13	°	P _o =20mW
	⊥	18	22	28	°	P _o =20mW
Beam Angle	△//	-	-	±3	°	P _o =20mW
	△⊥	-	-	±4	°	P _o =20mW

* Angle at 50% peak intensity (full-width at half-maximum)

Note: The above specification is subject to change without notice